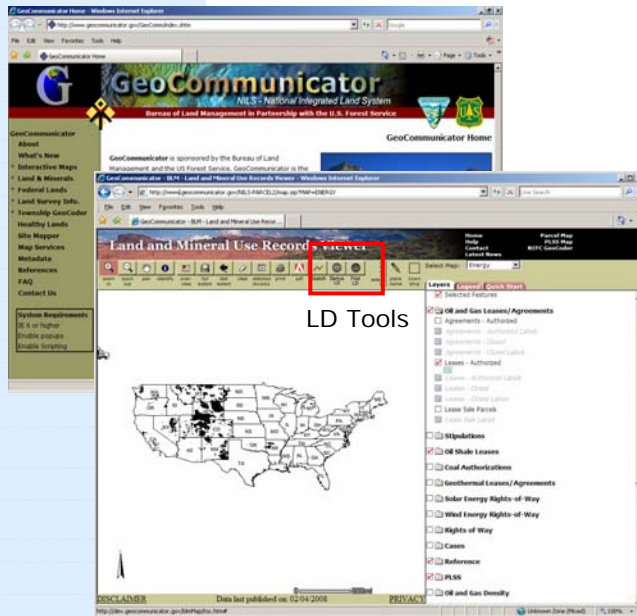


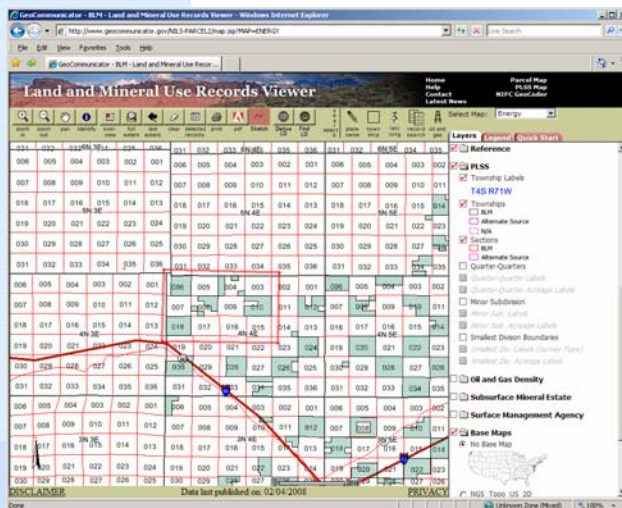


Using NILS GeoCommunicator's Find and Derive Land Description

NILS GeoCommunicator offers web services that are available as tools on NILS GeoCommunicator or as GeoRSS (Geographic Really Simple Syndication) web feed format to publish content for geographic locations. Use these services in NILS GeoCommunicator or develop your own interface within your application for these web services. The following instructions will guide you through an interactive web mapping session where you can find and derive land descriptions (LD) with NILS GeoCommunicator.



Find and Derive LD on the Energy Map



Using the Sketch Tool

Connect to the NILS GeoCommunicator website at <http://www.geocommunicator.gov>. Use Internet Explorer as your browser. Pop-Ups must be allowed.

Click "Energy Map" from the link on the home page.

Choose either "Energy" or "Land Status" from the select map pull down. These two maps contain the "Find LD" and "Derive LD" tools.

"Find LD" allows the user to enter the land description (township, range, section and aliquot) and returns the latitude and longitudinal coordinates for a given polygon that is drawn on a map.

"Derive LD" provides the capability to sketch on the map and have the land description containing state, meridian, township, range, section, and aliquot returned.

Derive LD



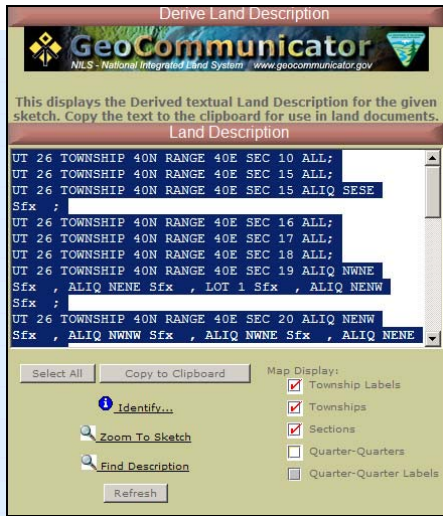
To use the "Derive LD" tool you must first sketch a polygon around the desired area.

Click "Sketch" on the top toolbar. Start in the upper left corner of your area and click the points. Go clockwise to draw the sketch.

It is best to draw just to the outside of the boundary as the system will return the aliquot parts that are fully contained within the polygon.

Use PLSS Layers for reference in drawing the parcel.

Once the sketch is closed, click "Derive LD".



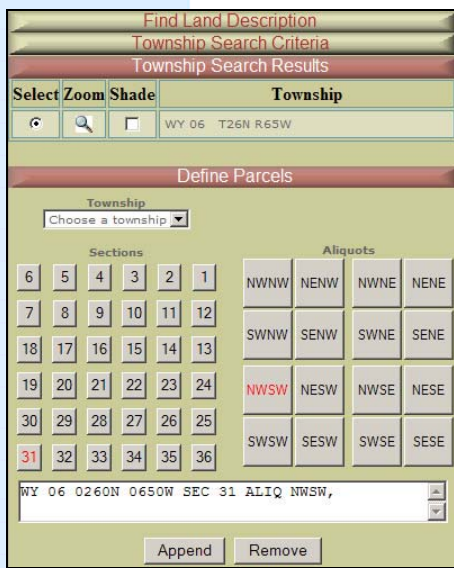
Derive Land Description Results

The land description will show automatically after a few seconds. The land descriptions may contain proceeding or trailing zeros as placeholders. (Ex. if the township is T4N it will show T40N, the trailing zero is place holder for half and quarter)

Click "Select All" to highlight the text. Click "Copy to Clipboard". You can then paste this text into any document.

Click "Identify" to bring up the Identify Window which shows all the authorized activities for the given area and provides links to reports.

Use the check boxes under map display to turn on and off PLSS layers.



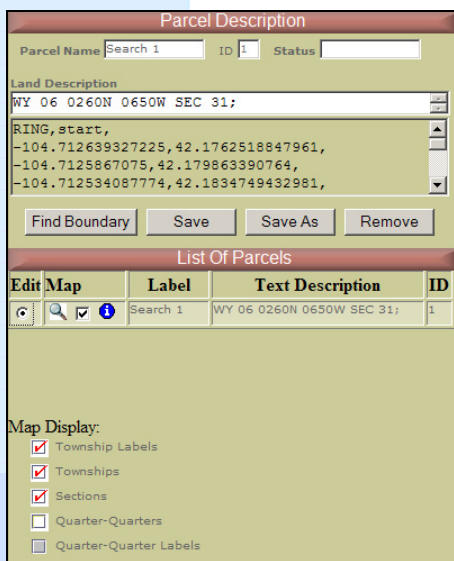
Township Search

Find LD

Click "Find LD" on the map. First select a state and then a meridian from the lists provides. Enter the township number and select a direction. Enter the range and select a direction. Click "Search".

"Click" the radio button next to select in the results to choose the correct land description if more than one is returned. The "Shade" checkbox and the "Zoom" control the map.

Under "Define Parcel" click a number to add a section. Select an aliquot (EX NWSW). Click "Append" to add the land description to the "Parcel Description" below. Multiple land descriptions can be added by clicking more than one section.



Find Land Description Results

Under "Parcel Description" add a parcel name. The parcel name is to describe your search.

Click "Find Boundary" to get the latitude and longitudinal coordinates for the polygon. The "Save As" button will create a row under "List of Parcels" containing all the information from the query.

Below the "List of Parcels" heading is the results to all saved queries. These saved queries will be erased when the Find Land Description window is closed.

To select the parcel on the map click the check box under "Map". For Information on the parcels in the area click the icon with an "I". The check boxes under Map display turn on and off the PLSS layers.

For more information please visit <http://www.geocommunicator.gov>.

V1007



National Integrated Land System (NILS)

www.blm.gov/nils

