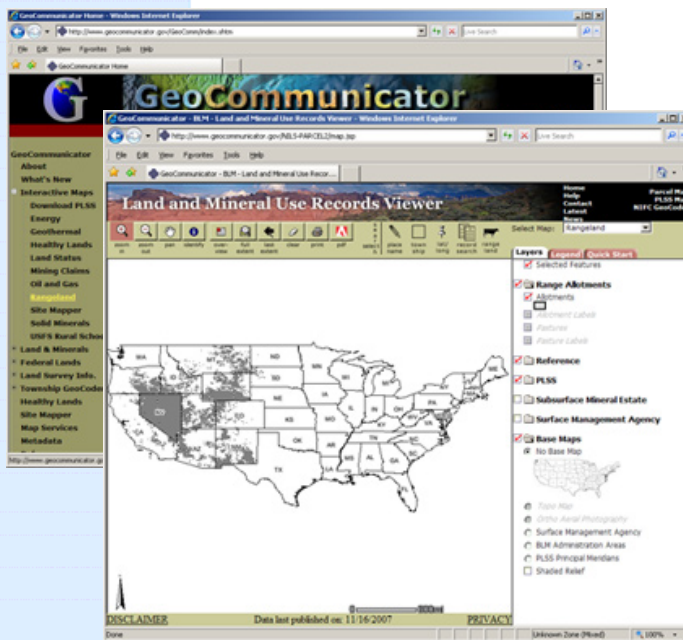


Accessing NLS GeoCommunicator's Rangeland Records

The Land and Mineral Use Records Rangeland map is available through the BLM's NLS GeoCommunicator website (www.geocommunicator.gov) and contains information from the BLM's National Integrated Land System (NLS) with access to the BLM's Rangeland Administration System - RAS (www.blm.gov/ras). The following instructions will guide you through an interactive web mapping session where you can search for Rangeland data and integrate it with other spatial reference themes from the BLM and USGS.



Map Viewer with Rangeland Layers

Connect to the GeoCommunicator website at <http://www.geocommunicator.gov>. Use Internet Explorer as your browser. Pop-Ups must be allowed.

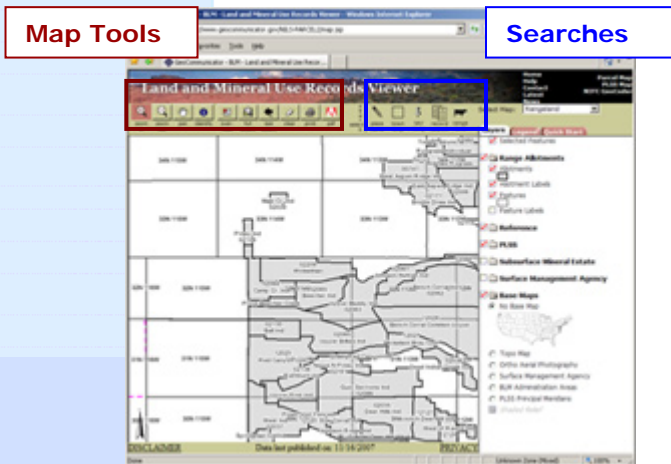
Connect to the Rangeland map by clicking "Interactive Maps" on the left menu. Then click "Rangeland".

The map layers (on the right) provide reference themes from BLM and USGS to provide spatial context that can be used to help you locate an area or to create a map.

Layers that are active have a check mark next to the name and the letters are in **bold**. The map layers in light gray are not active at the current map display. Zooming in/out will activate/deactivate the map layers.


The base maps can be toggled on and off by clicking the buttons under the "Base Maps" folder.

SEARCH For Rangelands in 3-ways




Rangeland Allotments and Pastures

1-Search using Map tools

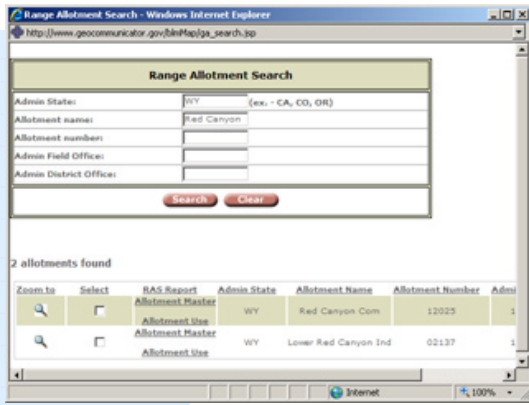
 Click "**Zoom In**" from the menu bar, then click (hold) and drag a box on the map where you want to zoom in to. Zoom in closer to display the allotments and pastures.

-OR-

2-Search using Place Name

 Click on "**Place Name**" from the menu bar, and enter the name of a place, such as a city, state, county, etc. A list of place names is returned. Click on the appropriate name in the list to zoom to your area of interest.

-OR-



Search Using the Rangeland Search

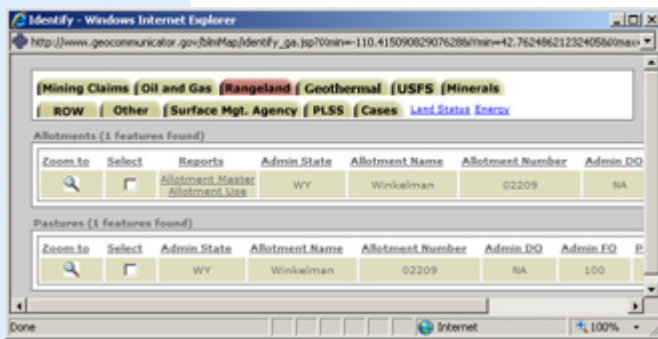
3-Search using Rangeland Search



Click on “**Rangeland**” from the menu bar to bring up the Rangeland Search window. Search for allotments using admin state, allotment name and allotment number.

As an example, enter “WY” in Admin State and enter “Red Canyon” in Allotment Name. Click “Search”.

The search results will appear below the search criteria. Click in the “**Select**” box to highlight the parcel or select “**Zoom**” to go to the parcel on the map. Click “**Allotment Master**” or “**Authorized Use**” to get an **up-to-date** report from the BLM RAS Site.



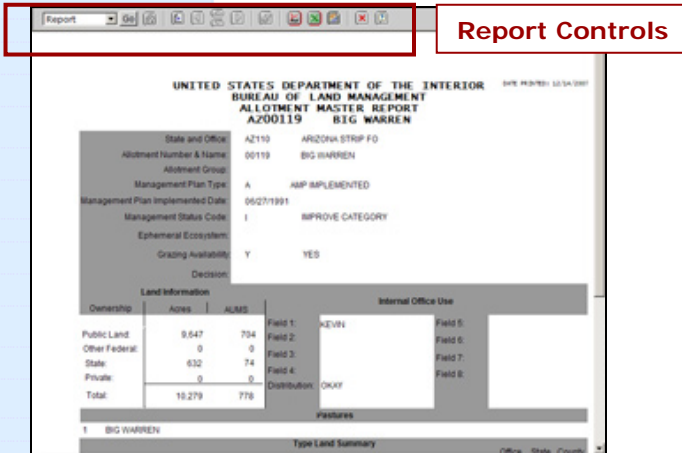
Identify Window



The “**Identify**” button is used to display record information about a parcel on the map. Click the “**Identify**” button and then click on the parcel on the map. From the **Identify Window** click on the tabs for record data including Surface Management Agency, PLSS (T/R/S) and Cases That Affect Land Status (CTALS).

For a full **up-to-date** report, click on “**Allotment Master**” or “**Authorized Use**”.

Click on “**Zoom**” to go to the allotment you want to display on the map. To highlight the allotment/pasture on the map, check the “**Select**” box next to the record.



Allotment Master from RAS

RAS Reports

The two reports that can be obtained from GeoCommunicator are the Allotment Master and Authorized Use reports.

The Allotment Master provides all the information about a specific allotment.

The Authorized Use Report provides a list of authorized uses for a specific allotment.

Use the controls at the top of the RAS report to view all of the pages in the report or to export the data to an excel spreadsheet.

You can also get RAS reports directly from the BLM’s Rangeland Administration System at: <http://www.blm.gov/ras>.

For more information visit <http://www.geocommunicator.gov>

Or contact: Ginny Pyles, Bureau of Land Management, gpyles@blm.gov

